

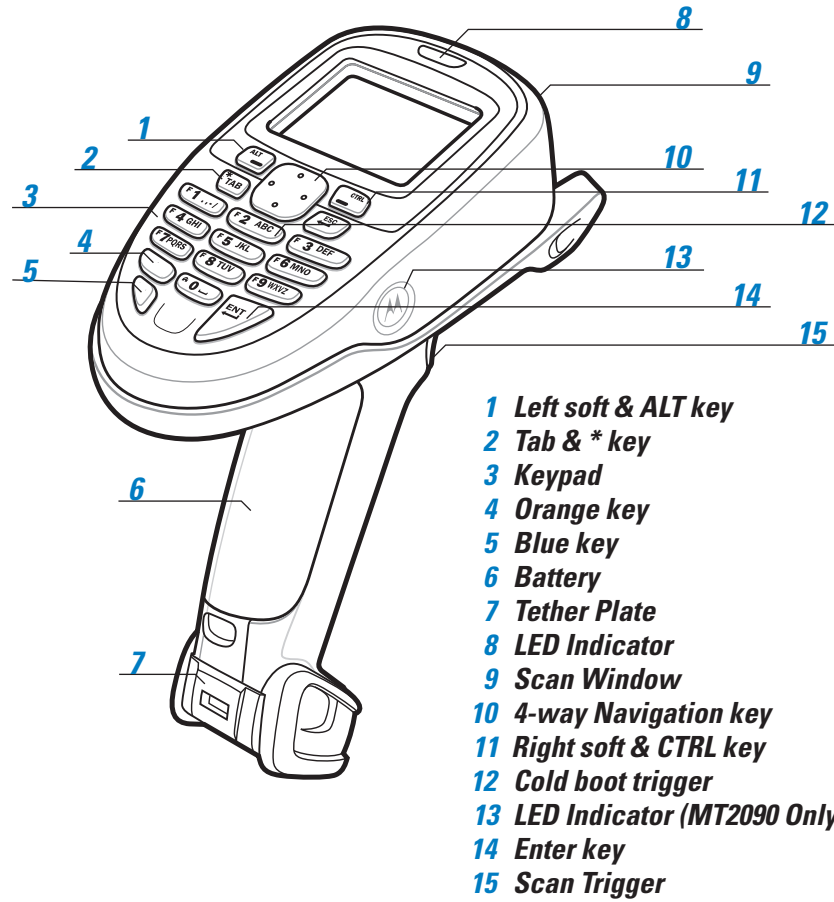
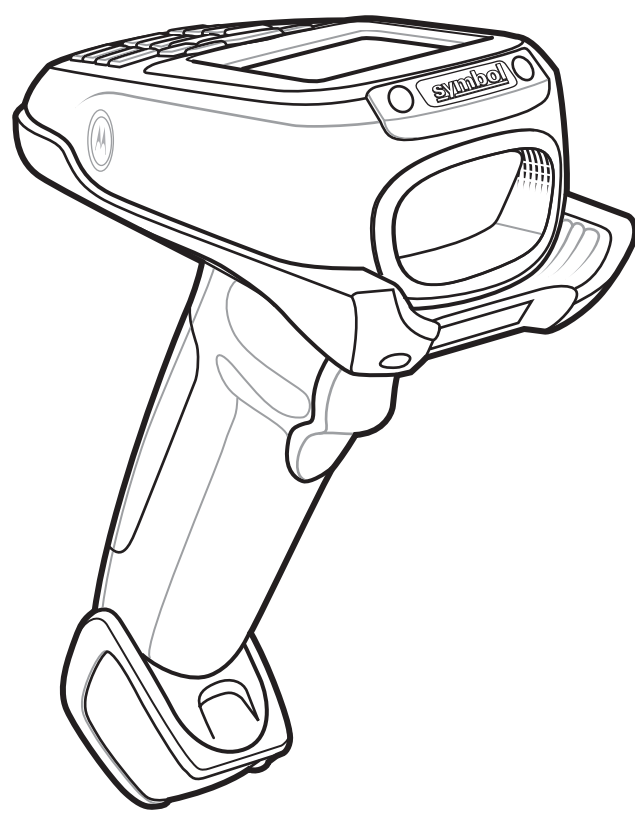


SYMBOL MT2000 Series

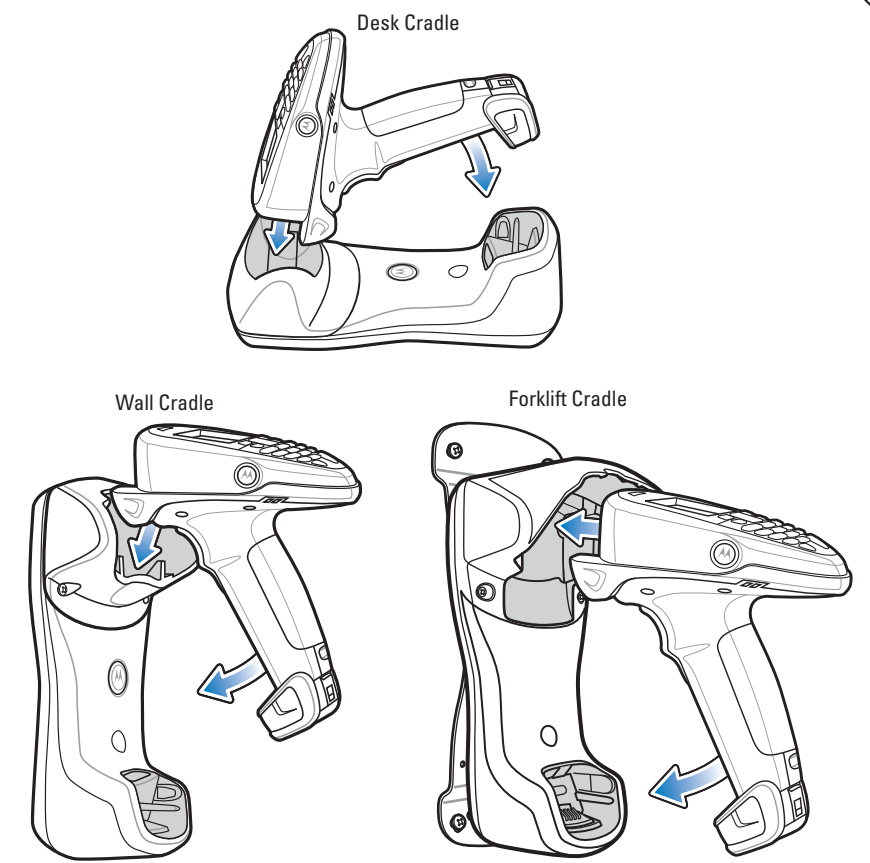
Quick Start Guide

<http://www.motorola.com/mt2070> Refer to User Guide for more information
<http://www.motorola.com/mt2090>

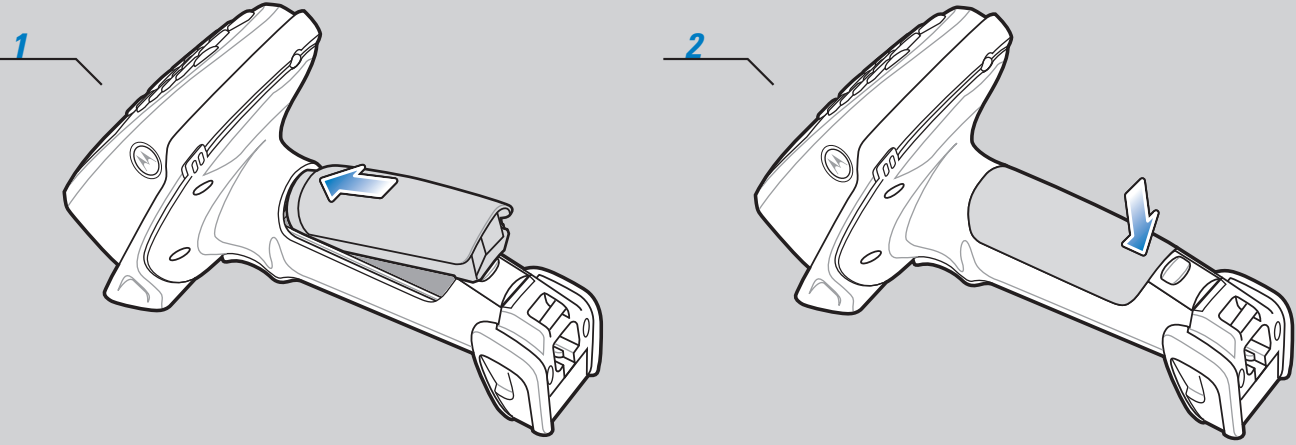
POST IN WORK AREA



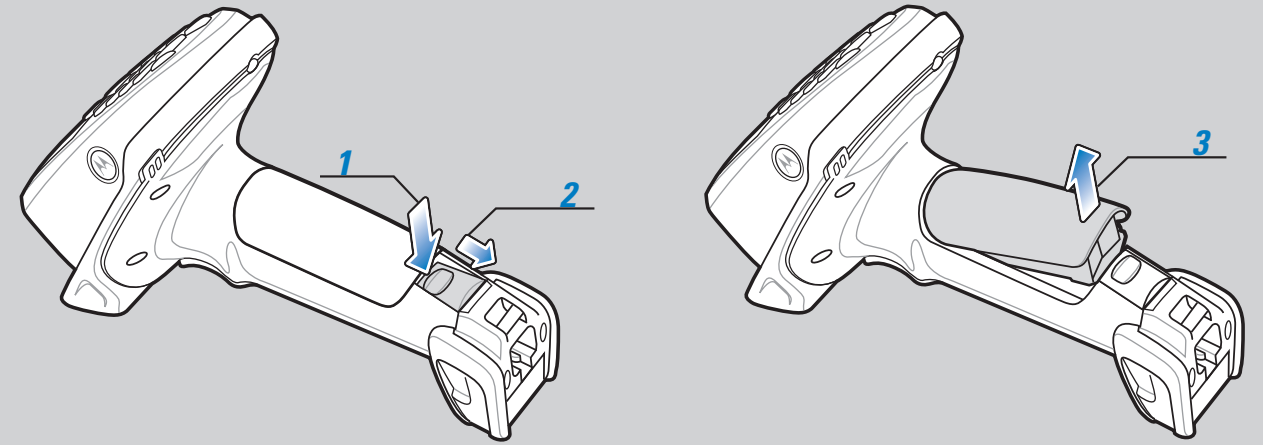
Insert Scanner in Cradle



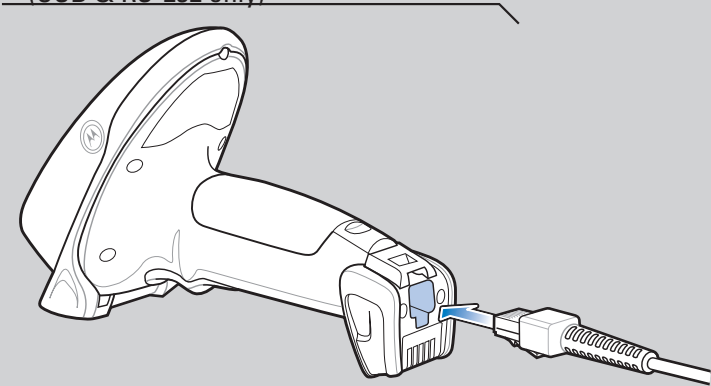
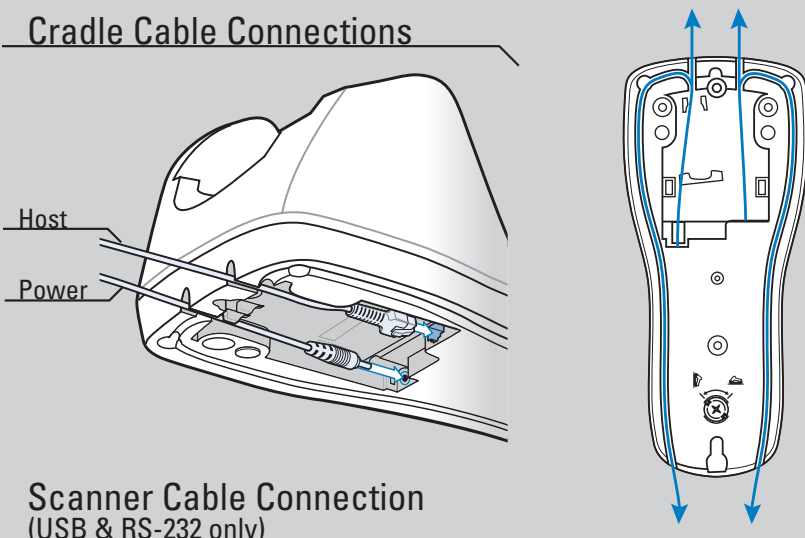
BATTERY INSERTION



BATTERY REMOVAL

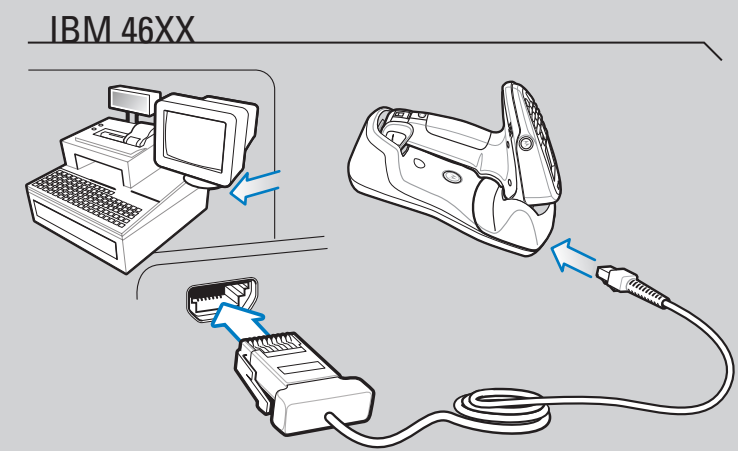
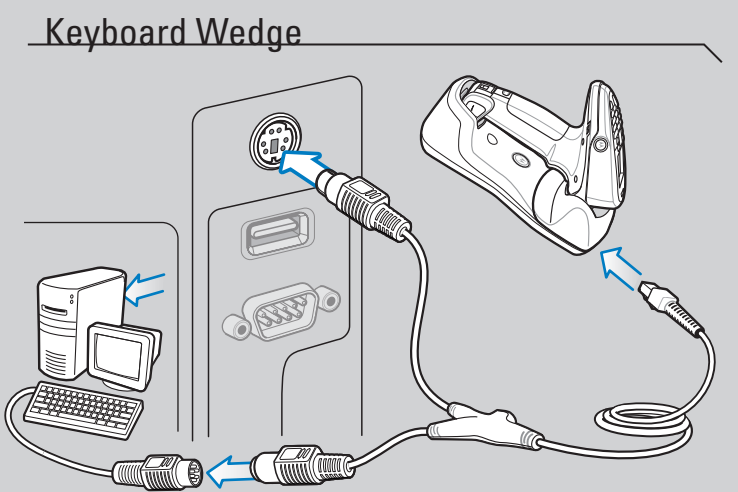
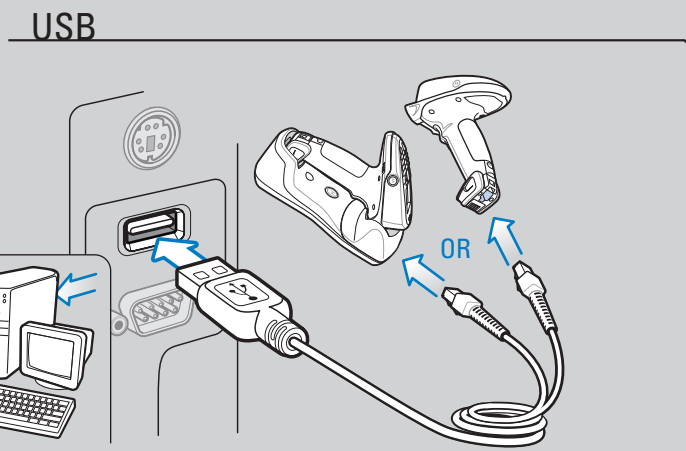
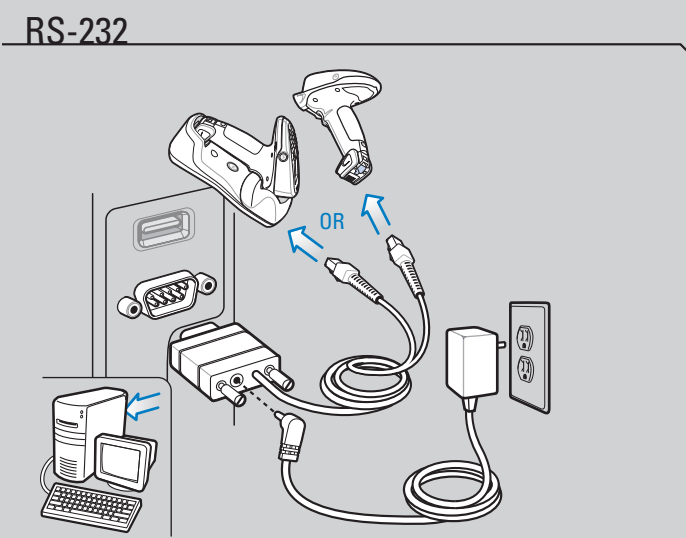


CONNECTIONS



NOTE: Cables may vary depending on configuration. When using an external power supply, insert the power cable into the cradle first, then insert the host cable. Connect the power cable to an AC outlet last.

HOST INTERFACES



TROUBLESHOOTING

Refer to the Symbol MT2000 Series User Guide Troubleshooting section for further information.

Scanner not working

No power to scanner
Check battery

NOTE: Under certain circumstances, a fully discharged battery can take up to 30 minutes to charge before the scanner is operational. Refer to the User Guide for detailed information.

Scanner not decoding bar code

Scanner not programmed for bar code type
Ensure scanner is programmed to read type of bar code being scanned

Bar code unreadable
Ensure bar code is not defaced; try scanning test bar code of same bar code type

Scanning application is not running
From the Home screen display on the scanner, select Scan Item to run the scanning application

Scanner decoding bar code, but data not transmitting to host

Scanner not paired to host-connected cradle
Pair the scanner to the cradle (using the PAIR bar code on the cradle)

Cradle not programmed for correct host interface
Check scanner host parameters or edit options

Interface cable is loose
Check for loose cable connections

Scanned data incorrectly displayed on host

Paired cradle host communication parameters do not match the host's parameters
Check cradle host parameters or edit options

NOTE: If data is still not transmitting to host, it may be necessary to recycle power on the cradle.

SYMBOL MT2000 SERIES PROGRAMMING BAR CODES

Host Types

RS-232 Host Types



STANDARD RS-232



ICL RS-232



NIXDORF RS-232 MODE B



FUJITSU RS-232



NIXDORF RS-232 MODE A



OPOS/JPOS

USB Host Types



HID KEYBOARD EMULATION

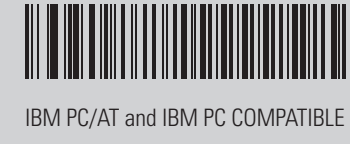


IBM HAND-HELD USB



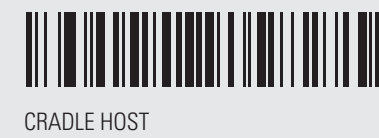
ACTIVESYNC HOST

Keyboard Wedge Host Types



IBM PC/AT and IBM PC COMPATIBLE

Radio Communications Host Types



CRADLE HOST



SERIAL PORT PROFILE (SLAVE)



BLUETOOTH KEYBOARD EMULATION (HID SLAVE)



SERIAL PORT PROFILE (MASTER)

IBM 46XX Host Types

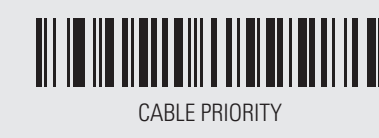


PORT 5B

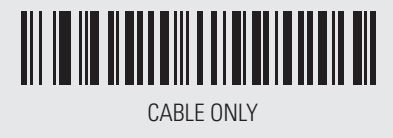


PORT 9B

Host Mode



CABLE PRIORITY



CABLE ONLY



WIRELESS ONLY

Miscellaneous

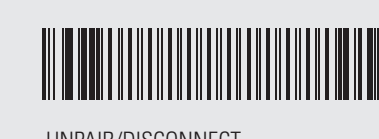
Set Defaults

Note: Paired scanners disconnect from the cradle when Set Defaults is scanned.



SET DEFAULTS

Unpairing/Disconnection



UNPAIR/DISCONNECT

Scan to Add an Enter Key (Carriage Return/Line Feed)



SCAN OPTIONS



<DATA><SUFFIX>



ENTER

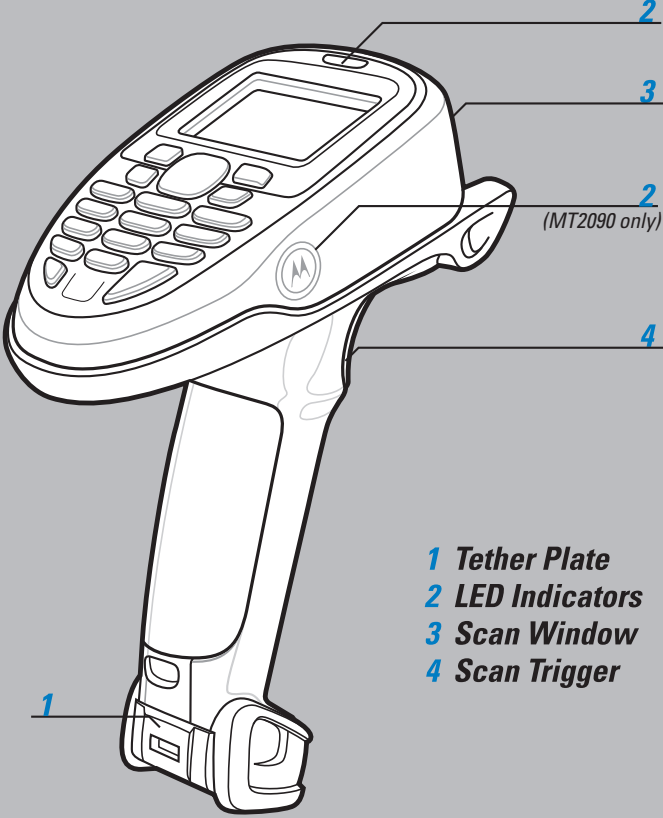


SYMBOL MT2000 Series

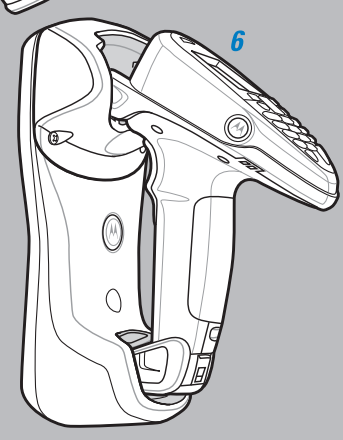
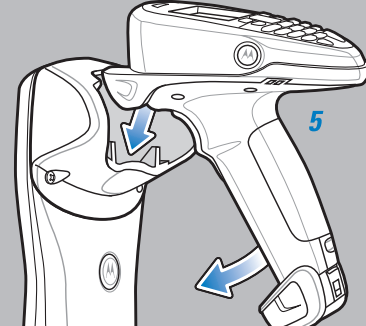
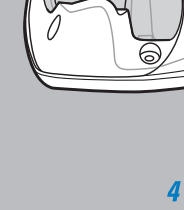
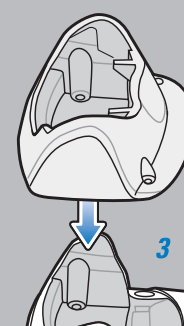
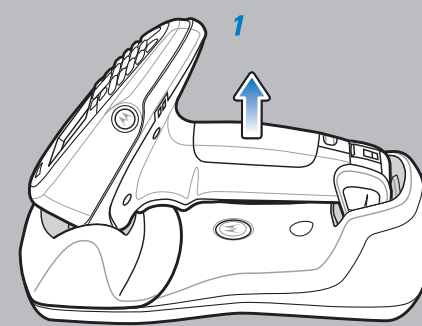
Quick Start Guide

DESK-TO-WALL MOUNT CRADLE CONVERSION

POST IN WORK AREA



- 1 Tether Plate
- 2 LED Indicators
- 3 Scan Window
- 4 Scan Trigger



NOTE: When mounting a cradle on a wall, ensure the Wall Mount Conversion Dial on the back of the cradle is in the correct position before mounting. Refer to the User Guide for detailed information about single slot, four slot and forklift cradles.

SCANNER INDICATIONS

Scanner Beeper Indications

Standard Use

Low-medium-high beeps Power up	Normal beep Bar code decoded (if decode beeper enabled)	4 long low beeps Transmission error detected; data is ignored
Short low-high beeps Scanner has paired with the cradle	Short high-low beeps Scanner has unpaired with the cradle	Long low-high beeps or Long low-high-low-high beeps Unsuccessful pairing attempt

Parameter Menu Scanning

High-low-high-low beeps Successful program exit with change in the parameter setting	Long low-high beeps Input error, incorrect programming sequence, or Cancel bar code scanned
--	---

Scanner Display Indications

Battery Strength

	Low battery, recharge
	Battery 25% full
	Battery 50% full
	Battery 75% full
	Battery full

Battery Charging/AC Power

	Low battery
	Battery 25% full
	Battery 50% full
	Battery 75% full
	Battery full

Scanner LED Indications

Standard Use

Off No power applied to scanner (battery discharged or removed); scanner is in low power and ready to scan; or, battery is fully charged and scanner is ready to scan.	Green Bar code successfully decoded
Red Data transmission error or scanner malfunction	

Charging Use

Green Flash Scanner charging (when cradle is powered from external power supply)
--

Battery Problem

	Battery fault
	Battery fault/AC power applied

Wireless Signal Strength

	No signal or not associated		Medium signal
	Very low signal		Good signal
	Low signal		Excellent signal

Connection Icons

	Bluetooth active (STB2078 only)
	RS-232 cable attached
	USB cable attached

Waste Electrical and Electronic Equipment (WEEE)

English: For EU Customers: All products at the end of their life must be returned to Motorola for recycling. For information on how to return product, please go to: <http://www.motorola.com/recycling/weee>.

Italian: Per i clienti in Italia: Tutti i prodotti alla fine della loro vita devono essere restituiti a Motorola per essere riciclati. Per informazioni su come restituire il prodotto, visitate: <http://www.motorola.com/recycling/weee>.

Chinese: 此设备为欧盟客户设计。所有产品在生命周期结束时，必须送回摩托罗拉进行回收。有关回收信息，请访问：<http://www.motorola.com/recycling/weee>。

Spanish: Para clientes en España: Todos los productos al final de su vida útil deben ser devueltos a Motorola para reciclaje. Para obtener información sobre cómo devolver el producto, visite: <http://www.motorola.com/recycling/weee>.

Portuguese: Para clientes em Portugal: Todos os produtos ao fim da sua vida útil devem ser devolvidos à Motorola para reciclagem. Para obter informações sobre como devolver o produto, visite: <http://www.motorola.com/recycling/weee>.

French: Pour les clients en France: Tous les produits en fin de cycle de vie doivent être renvoyés à Motorola pour recyclage. Pour de plus amples informations sur le retour de produits, consultez: <http://www.motorola.com/recycling/weee>.

German: Für Kunden in Deutschland: Alle Produkte müssen am Ende ihres Lebenszyklus zum Recycling an Motorola zurückgegeben werden. Informationen zur Rücksendung von Produkten finden Sie unter: <http://www.motorola.com/recycling/weee>.

Polish: Dla klientów w Polsce: Wszystkie produkty po zakończeniu ich cyklu życia muszą być oddane do recyklingu w Motorola. Aby uzyskać więcej informacji, odwiedź stronę: <http://www.motorola.com/recycling/weee>.

Japanese: EU向けのお客様: 製品のライフサイクルの終わりに至ると、製品は必ずしもたにモトローラに返却する必要があります。製品を返却する方法については、<http://www.motorola.com/recycling/weee>をご覧ください。

Swedish: För kunder inom EU: Alla produkter som uppnår sin livslängd måste returneras till Motorola för återvinning. För information om hur man returnerar produkter till Motorola, gå till: <http://www.motorola.com/recycling/weee>.

Software Support

Motorola Enterprise Mobility wants to ensure that customers have the latest entitled software at the time of device* purchase in order to keep the device operating at peak performance levels. To confirm that your Motorola device* has the latest entitled software available at the time of purchase, visit <http://www.motorola.com/enterprisemobility>. Check for the latest software from Support > Enterprise Mobility Products, or search for the device and select Support > Software Downloads.

If it is determined by Motorola that your device is entitled to the latest version of software, as of the date you purchased your device, you will receive an e-mail containing a link directing you to a Motorola Web site to download the appropriate software.

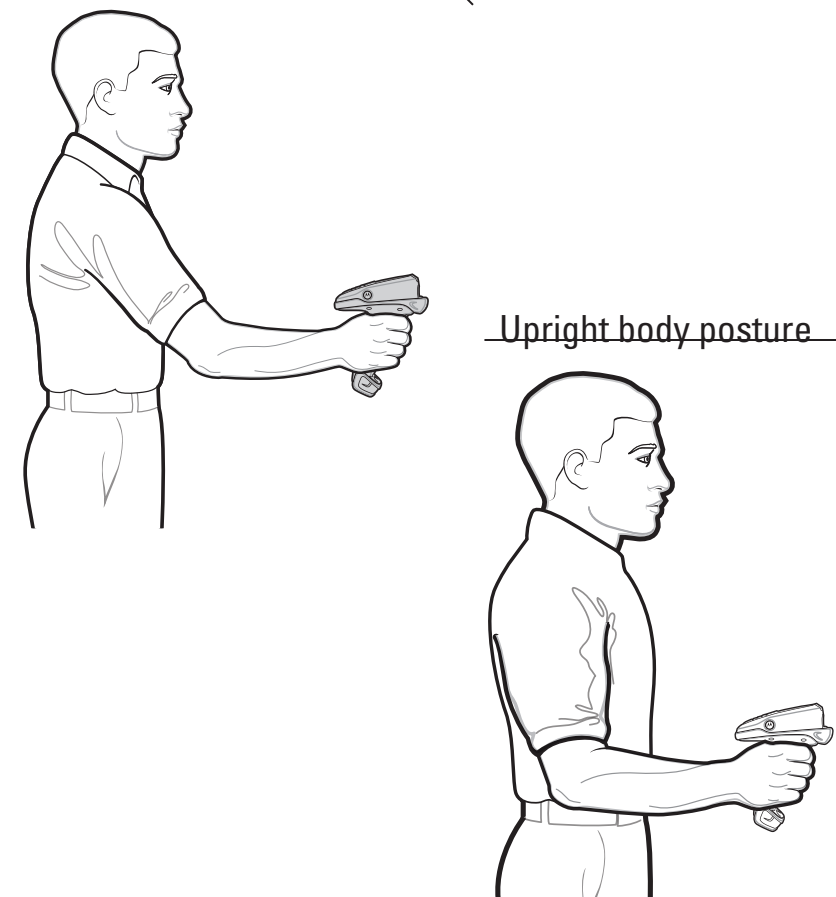
* This applies to Motorola Mobile Computing devices and select Advanced Data Capture devices.

RECOMMENDED USAGE GUIDE - OPTIMUM BODY POSTURE

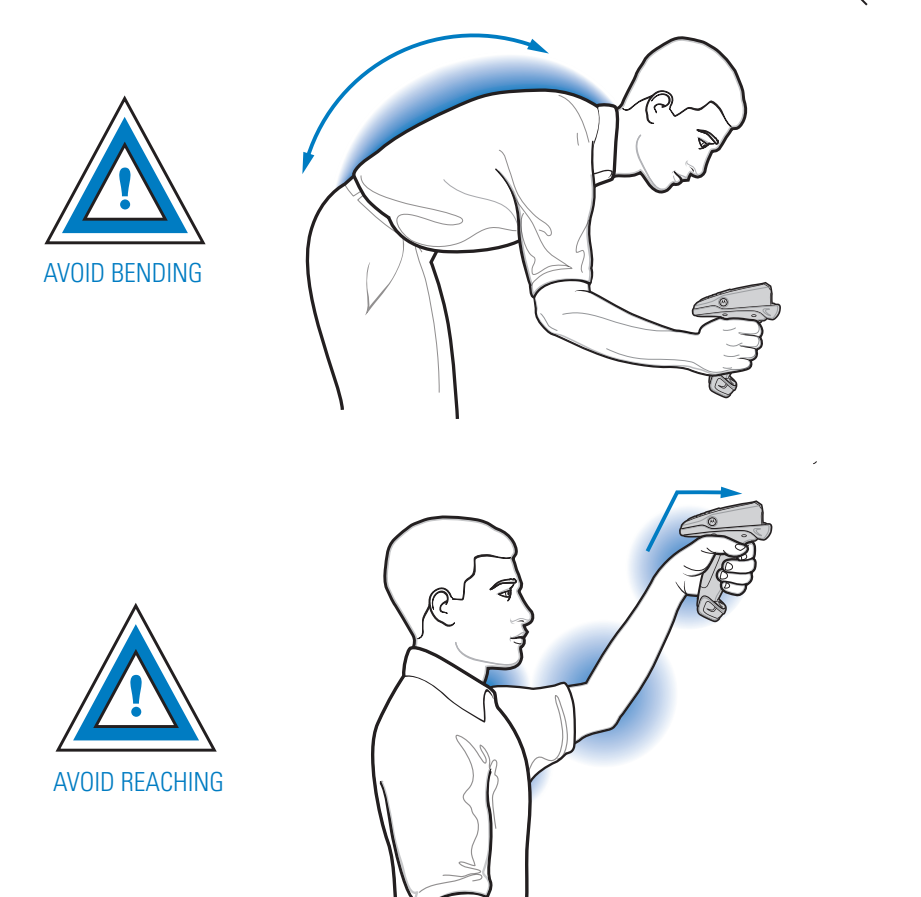
Low scanning



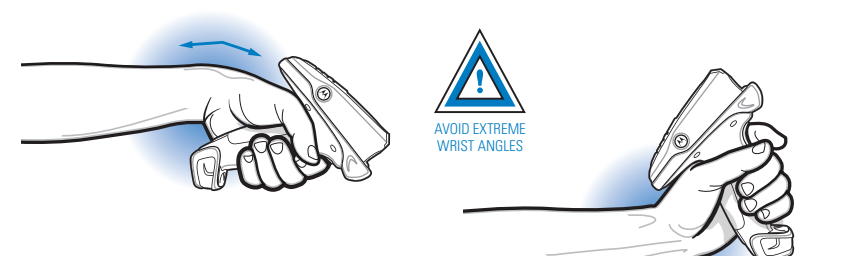
Extended range scanning



Avoid bending and reaching



Avoid extreme wrist angles



SYMBOL MT2000 Series

REGULATORY INFORMATION

This device is approved under the Symbol Technologies brand: Symbol Technologies, Inc., is the Enterprise Mobility business of Motorola, Inc. ("Motorola"). All Motorola/Symbol devices are designed to be compliant with rules and regulations in locations they are sold and will be labeled as required.

Local language translations are available at the following website: <http://www.motorola.com/enterprisemobility/support>.

Any changes or modifications to Motorola/Symbol Technologies equipment, not expressly approved by Motorola/Symbol Technologies, could void the user's authority to operate the equipment.

CAUTION: Only use Motorola/Symbol approved and UL Listed accessories, battery packs and battery chargers. Do NOT attempt to charge damp/wet mobile computers or batteries. All components must be dry before connecting to an external power source.

Wireless Device Country Approvals
Regulatory markings, subject to certification, are applied to the device signifying the radio(s) is/are approved for use in the following countries: United States, Canada, Japan, China, S. Korea, Australia, and Europe 1. Please refer to the Symbol Declaration of Conformity (DoC) for details of other country markings. This is available at <http://www2.symbol.com/doc/>.

Note 1: For 2.4GHz or 5GHz Products: Europe includes, Austria, Belgium, Bulgaria, Czech Republic, Cyprus, Denmark, Estonia, Finland, France, Germany, Greece, Hungary, Iceland, Ireland, Italy, Latvia, Liechtenstein, Lithuania, Luxembourg, Malta, Netherlands, Norway, Poland, Portugal, Romania, Slovak Republic, Slovenia, Spain, Sweden, Switzerland and the United Kingdom.

Operation of the device without regulatory approval is illegal.
Frequency of Operation – FCC and IC
5 GHz Only
The use in the Indoor (Unlicensed National Information Infrastructure) band 1 5150-5250 MHz band is restricted to InUI Only; any other use will make the operation of this device illegal.

2.4 GHz Only
The available channels for 802.11 b/g operation in the US are Channels 1 to 11. The range of channels is limited by firmwarr.

Health and Safety Recommendations

Ergonomic Recommendations
Caution: In order to avoid or minimize the potential risk of ergonomic injury follow the recommendations below. Consult with your local Health & Safety Manager to ensure that you are adhering to your company's safety programs to prevent employee injury.

- Reduce or eliminate repetitive motion
- Perform tasks at correct heights
- Provide adequate clearance
- Maintain a natural posture
- Reduce or eliminate vibration
- Provide a suitable working environment
- Reduce or eliminate excessive force
- Reduce or eliminate direct pressure
- Improve work procedures
- Keep objects that are used frequently within easy reach
- Provide adjustable workstations

Warnings for Use of Wireless Devices

Please observe all warning notices with regard to the usage of wireless devices

Safety in Hospitals
Wireless devices transmit radio frequency energy and may affect medical electrical equipment. Wireless devices should be switched off wherever you are requested to do so in hospitals, clinics or health care facilities. These requests are designed to prevent possible interference with sensitive medical equipment.

Pacemakers

Pacemaker manufacturers recommended that a minimum of 15cm (6 inches) be maintained between a handheld wireless device and a pacemaker to avoid potential interference with the pacemaker. These recommendations are consistent with independent research and recommendations by Wireless Technology Research.

Persons with Pacemakers:

- Should ALWAYS keep the device more than 15cm (6 inches) from their pacemaker when turned ON.
- Should not carry the device in a breast pocket.
- Should use the ear farthest from the pacemaker to minimize the potential for interference
- If you have any reason to suspect that interference is taking place, turn OFF your device.

Other Medical Devices

Please consult your physician or the manufacturer of the medical device, to determine if the operation of your wireless product may interfere with the medical device.

RF Exposure Guidelines
Safety Information
Reducing RF Exposure – Use Properly
Only operate the device in accordance with the instructions supplied.

International

The device complies with internationally recognized standards covering human exposure to electromagnetic fields from radio devices.

EU
Handheld Devices
To comply with EU RF exposure requirements, this device must be operated in the hand with a minimum separation distance of 20 cm or more from a person's body. Other operating configurations should be avoided. For information on "International" human exposure to electromagnetic fields refer to the Motorola/Symbol Declaration of Conformity (DoC) at <http://www2.symbol.com/doc/>.

US and Canada
Handheld Devices
To comply with FCC RF exposure requirements, this device must be operated in the hand with a minimum separation distance of 20 cm or more from a person's body. Other operating configurations should be avoided.

Batteries
Charging
To charge the device battery, the battery and charger temperatures must be between +32°F and +104°F (0°C and +40°C). Please follow the local regulations when disposing of re-chargeable batteries.

Taiwan - Recycling 「廢電池請回收」
EPA (Environmental Protection Administration) requires dry battery producing or importing firms in accordance with Article 15 of the Waste Disposal Act are required to indicate the recycling marks on the batteries used in sales, giveaway or promotion. Contact a qualified Taiwanese recycler for proper battery disposal.

Battery Information
Motorola/Symbol rechargeable battery packs are designed and constructed to the highest standards within the industry. However, there are limitations to how long a battery can operate or be stored before needing replacement. Many factors affect the actual life cycle of a battery pack, such as heat, cold, harsh environmental conditions and severe drops. When batteries are stored over six (6) months, some irreversible deterioration in overall battery quality may occur. Store batteries at half of full charge in a dry, cool place, removed from the equipment to prevent loss of capacity, rusting of metallic parts and electrolyte leakage. When storing batteries for one year or longer, the charge level should be verified at least once a year, recharged to full charge.

Replace the battery when a significant loss of run time is detected. Standard warranty period for all Symbol batteries is 90 days, regardless if the battery was purchased separately or included as part of the mobile computer or bar code scanner.

Battery Safety Guidelines

- The area in which the units are charged should be clear of debris and combustible materials or chemicals. Particular care should be taken where the device is charged in a non commercial environment.
- Follow battery usage, storage, and charging guidelines found in the user's guide.
- Improper battery use may result in a fire, explosion, or other hazard.
- To charge the mobile device battery, the battery and charger temperatures must be between +32°F and +104°F (0°C and +40°C)
- Do not use incompatible batteries and chargers. Use of an incompatible battery or charger may present a risk of fire, explosion, leakage, or other hazard. If you have any questions about the compatibility of a battery or a charger, contact Motorola Enterprise Mobility support.
- For devices that utilize a USB port as a charging source, the device shall only be connected to products that bear the USB-IF logo or have completed the USB-IF compliance program.
- Do not disassemble or open, crush, bend or deform, puncture, or shred.
- Severe impact from dropping any battery-operated device on a hard surface could cause the battery to overheat.
- Do not short circuit a battery or allow metallic or conductive objects to contact the battery terminals.
- Do not modify or remanufacture, attempt to insert foreign objects into the battery, immerse or expose to water or other liquids, or expose to fire, explosion, or other hazard.
- Do not leave or store the equipment in or near areas that might get very hot, such as in a parked vehicle or near a radiator or other heat source. Do not place battery into a microwave oven or dryer.
- Battery usage by children should be supervised.
- Please follow local regulations to promptly dispose of used re-chargeable batteries.
- Do not dispose of batteries in fire.
- Seek medical advice immediately if a battery has been swallowed.
- In the event of a battery leak, do not allow the liquid to come in contact with the skin or eyes. If contact has been made, wash the affected area with large amounts of water and seek medical advice.
- If you suspect damage to your equipment or battery, contact Motorola Enterprise Mobility support to arrange for inspection.

Radio Frequency Interference Requirements- FCC

FCC Tested to comply with Class B digital device, pursuant to Part 15 of the FCC rules. This limits are designed to provide reasonable protection against harmful interference in a residential installation. This equipment generates, uses and can radiate radio frequency energy and, if not installed and used in accordance with the instructions, may cause harmful interference to radio communications. However there is no guarantee that interference will not occur in a particular installation. If this equipment does cause harmful interference to radio or television reception, which can be determined by turning the equipment off and on, the user is encouraged to try to correct the interference by one or more of the following measures:

- Reorient or relocate the receiving antenna
- Increase the separation between the equipment and receiver
- Connect the equipment into an outlet on a circuit different from that to which the receiver is connected
- Consult the dealer or an experienced radio/TV technician for help.

Radio Transmitters (Part 15)
This device complies with Part 15 of the FCC Rules. Operation is subject to the following two conditions: (1) this device may not cause harmful interference, and (2) this device must accept any interference received, including interference that may cause undesired operation.

Radio Frequency Interference Requirements- Canada
This Class B digital apparatus complies with Canadian ICES-003.
Cet appareil numérique de la classe B est conforme à la norme NMB-003 du Canada.
Radio Transmitters
For RLAN Devices:
The use of 5 GHz RLANs, for use in Canada, have the following restrictions:
• Restricted Band 5.60 – 5.85 GHz
This device complies with RSS 210 of Industry & Science Canada. Operation is subject to the following two conditions: (1) this device may not cause harmful interference and (2) this device must accept any interference received, including interference that may cause undesired operation.
Label Marking: The Term "IC" before the radio certification only signifies that Industry Canada technical specifications were met.

CE Marking and European Economic Area (EEA)
The use of 2.4GHz RLANs, for use through the EEA, has the following restrictions:
• Maximum radiated transmit power of 100 mW ERP in the frequency range 2.400 - 2.4835 GHz.
• France, outside usage is restricted to 2.4 - 2.454 GHz.
• Italy requires a user license for outside usage.
The use of 5GHz RLANs has varying restrictions for use within the EEA; please refer to the Motorola/Symbol Declaration of Conformity (DoC) for details at <http://www2.symbol.com/doc/>.
Bluetooth® Wireless Technology for use through the EEA has the following restrictions:
• Maximum radiated transmit power of 100mW ERP in the frequency range 2.400 - 2.4835 GHz
• France, outside usage is restricted to 10mW EIRP
• Italy requires a user license for outside usage.

Statement of Compliance
Motorola/Symbol hereby declares that this device is in compliance with the essential requirements and other relevant provisions of Directive 1999/5/EC. A Declaration of Conformity may be obtained from <http://www2.symbol.com/doc/>.

Japan (VCCI) - Voluntary Control Council for Interference
この装置は、情報処理装置等電波障害自主規制協議会（VCCI）の基準に基づくクラスB情報技術装置です。この装置は、家庭環境で使用することを目的としていますが、この装置がラジオやテレビジョン受信機に近接して使用されると、受信障害を引き起こすことがあります。取扱説明書に従って正しい取り扱いをして下さい。
This is a Class B product based on the standard of the Voluntary Control Council for Interference from Information Technology Equipment (VCCI). If this is used near a radio or television receiver in a domestic environment, it may cause radio interference. Install and use the equipment according to the instruction manual.

Other Countries
Brazil
Declarações Regulamentares para MT2090 - Brasil
Nota: "A marca de certificação se aplica ao Transceptor, modelo MT2090. Este equipamento opera em caráter secundário, isto é, não tem direito a proteção contra interferência prejudicial, mesmo de estações do mesmo tipo, e não pode causar interferência a sistemas operando em caráter primário."
Para maiores informações sobre ANATEL consulte o site: www.anatel.gov.br

Mexico - Restrict Frequency Range to: 2.450 – 2.4835 GHz.
Sri Lanka - Restrict Frequency Range to: 2.400 – 2.430 GHz.

Taiwan
臺灣
低功率電波輻射性電機管理辦法
第十二條
經型式認證合格之低功率射頻電機，非經許可，公司、商號或使用者均不得擅自變更頻率、加大功率或變更原設計之特性及功能。
第十四條
低功率射頻電機之使用不得影響飛航安全及干擾合法通信；經發現有干擾現象時，應立即停用，並改善至無干擾時方得繼續使用。
前項合法通信，指依電信管理作業之無線電通信。
低功率射頻電機須接受合法通信或工業、科學及醫療用電波輻射性電機設備之干擾。
限制頻率範圍是：
2.400 - 2.4835 GHz, 最大發射功率: 27dBm
5.250 - 5.350 GHz, 最大發射功率: 17dBm
5.725 - 5.850 GHz, 最大發射功率: 24dBm
2.4GHz: 11個頻道
5GHz: 1個頻道
在 5.25-5.35 GHz 赫頻帶內操作之無線資訊傳輸設備，限於室內使用。

Laser Labels
In accordance with Clause 5, IEC 825 and EN60825, the following information is provided to the user

ENGLISH CLASS 1 LASER PRODUCT LASER LIGHT DO NOT STARE INTO BEAM CLASS 1 LASER PRODUCT	GERMAN / DEUTSCH KLASSE 1 LASERPRODUKT LASERSTRAHLEN NICHT DIREKT IN DEN STRAHLEN SCHAUEN LASERPRODUKT DER KLASSE 2	PORTUGUESE / PORTUGUÊS CLASSE 1 PRODUTO LASER DA CLASSE 1 LÍZ DE LASER (NÃO FAZEM LUMINOSSO) PRODUTO LASER DA CLASSE 2
DANISH / DANSK KLASSE 1 LASERPRODUKT LASERLÆG SE IKKE IND I STRÅLEN KLASSE 1 LASERPRODUKT	JAPANESE 日本語 準 第一種レーザー製品 レーザー光線 光線を見つめないでください 第一種レーザー製品	SPANISH / ESPAÑOL CLASE 1 LÁZER NO MIREN EN LA HAZ PRODUTO LASER DE LA CLASE 2
DUTCH / NEDERLANDS KLASSE 1 LASERPRODUCT LASERLICHT NIET IN STRAAL STAAREN KLASSE 1 LASERPRODUCT	HERBERG 第一種レーザー製品 レーザー光線 光線を見つめないでください 第一種レーザー製品	SWEDISH / SVENSKA KLASS 1 LASERPRODUKT KLASS 2 LASERPRODUKT LASERPRODUKT KLASS 2
FINNISH / SUOMI LUOKKA 1 LASERITUOTE LUOKKA 2 LASERITUOTE ÄLÄ TÄRÄÄ SÄÄTTÄ LUOKKA 2 LASERITUOTE	ITALIAN / ITALIANO CLASSE 1 PRODOTTO AL LASER DI CLASSE 1 CLASSE 2 LUCE LASER NON FISSARE IL RAGGIO/PRODOTTO AL LASER DI CLASSE 1	CHINESE 简体中文 1类 1类激光产品 激光产品 2类 2类激光产品
FRENCH / FRANÇAIS CLASSE 1 PRODUIT LASER DE CLASSE 1 CLASSE 2 LASER NE REGARDEZ PAS DIRECTEMENT PRODUIT LASER DE CLASSE 2	NORWEGIAN / NORSK KLASSE 1 LASERPRODUKT KLASSE 2 LASERPRODUKT LASERPRODUKT, KLASSE 2	KOREAN 한국어 1급 1급 레이저 제품 2급 2급 레이저 제품 2급 레이저 제품

Laser Devices
Complies with 21CFR1040.10 and 1040.11 except for deviations pursuant to Laser Notice No. 50, June 24, 2007 and IEC 60825-1(ED 2) and EN60825-1:2007.

The laser classification is marked on one of the labels on the device.
Class 1 Laser devices are not considered to be hazardous when used for their intended purpose. The following statement is required to comply with US and international regulations:
Caution: Use of controls, adjustments or performance of procedures other than those specified herein may result in hazardous laser light exposure.
Class 2 laser scanning device a low power, visible light device. As with any other bright light source, such as the sun, the user should avoid staring directly into the light beam. Momentary exposure to a Class 2 laser is not known to be harmful.

CAUTION: CLASS 2 LASER LIGHT WHEN OPEN, DO NOT STARE INTO THE BEAM. ATTENTION: LASER LIGHT WHEN OPEN, DO NOT STARE INTO THE BEAM. ATTENTION: LASER LIGHT WHEN OPEN, DO NOT STARE INTO THE BEAM. ATTENTION: LASER LIGHT WHEN OPEN, DO NOT STARE INTO THE BEAM. ATTENTION: LASER LIGHT WHEN OPEN, DO NOT STARE INTO THE BEAM.

注意：打开时及视线接触时有激光直射到直视光束

SYMBOL MT2000 Series

MOTOROLA and the Stylized M Logo and Symbol and the Symbol logo are registered in the U.S. Patent and Trademark Office. All other product or service names are the property of their respective owners. © Motorola, Inc., 2009
<http://www.motorola.com/mt2070>
<http://www.motorola.com/mt2090>



72-117308-01 Revision B July 2009